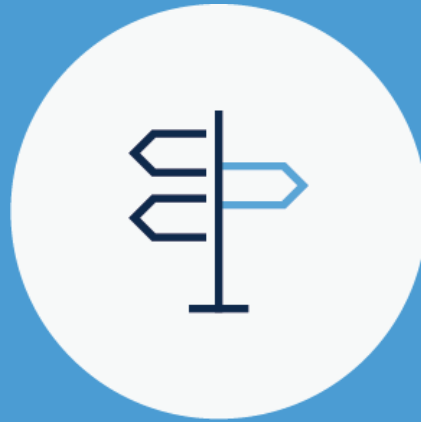


Open Enrollment

Oct. 15-31, 2020



Two ways to complete your Open Enrollment

ONLINE

- Log into ConnectCarolina>Self Service>My Benefits>Benefits Enrollment (on left)>Health Insurance.
- Click “Enroll Now” to enter the State’s Enrollment Portal.

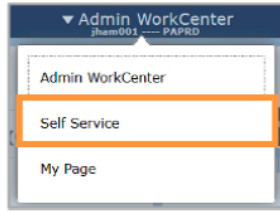
BY PHONE

- Call the State Enrollment Center at 1-855-859-0966.

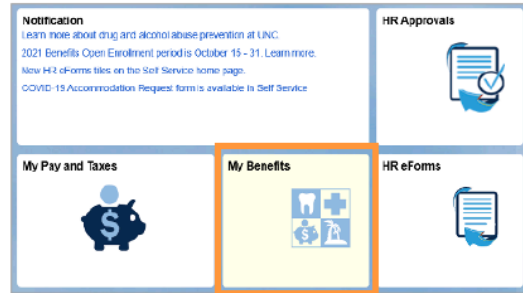
Enroll online or by phone between **Oct. 15-31, 2020.**

Access Open Enrollment

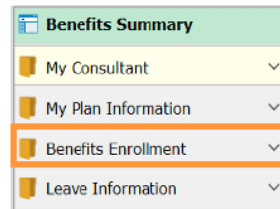
1. Log in to [ConnectCarolina](#).
2. Select [Self Service](#) from the drop-down menu at the top next to [Admin WorkCenter](#).



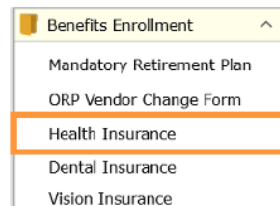
3. Click on the [My Benefits](#) tile.



4. Select [Benefits Enrollment](#) from the menu options.



5. Select [Health Insurance](#) from the list of options.

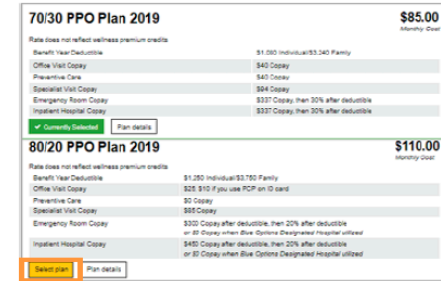


6. Click [Enroll Now!](#)



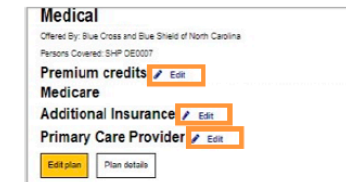
Complete Open Enrollment

1. Click [GET STARTED >](#).
2. Update dependents if necessary, then click [NEXT](#).
3. Choose your Medical Plan.
Your current plan will display as selected. To change your plan, click the [Select Plan](#) button for that plan.

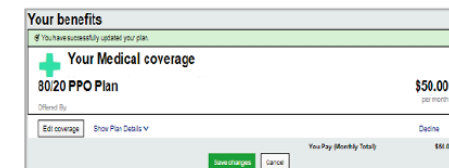


Once you have chosen your plan click [NEXT](#).

4. Complete the Tobacco Attestation. Select your answer, then click [NEXT](#).
5. Your Medical Summary will display. To change or update any of the categories, click [Edit](#) beside that category.

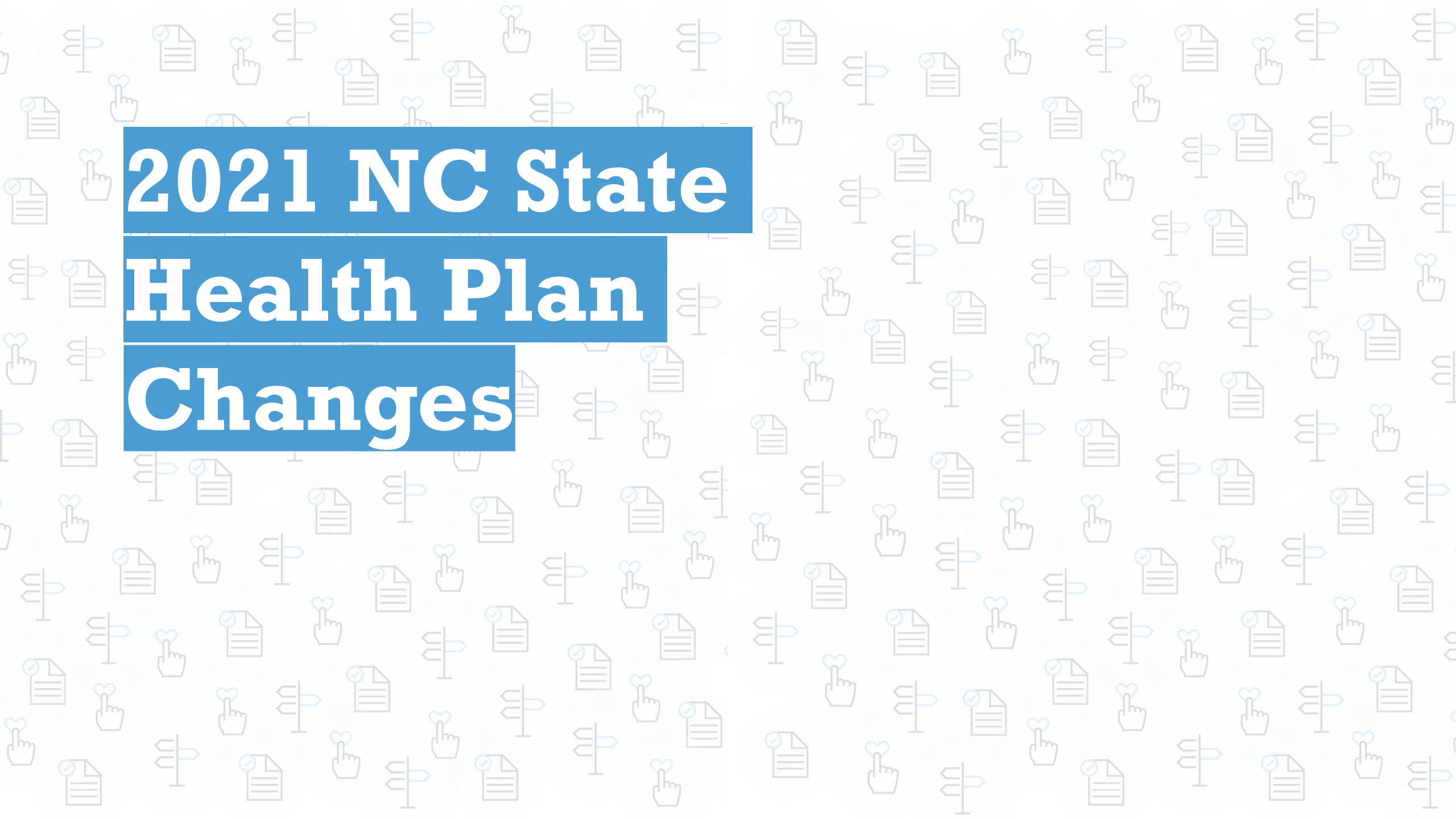


6. Your benefits selections for medical and costs will display. If you need to make changes click [Edit Coverage](#), if not, click [Save Changes](#).



7. After reviewing benefits and updating your remaining benefits, a confirmation appears that you have successfully completed enrollment. Please review and print a copy for your records using the link as shown below.





2021 NC State Health Plan Changes



Dale R. Folwell, CPA
STATE TREASURER OF NORTH CAROLINA
DALE R. FOLWELL, CPA

Open Enrollment for Active Members

October 15-31, 2020

[Link to video](#)

Health Care Providers

Blue Cross Blue Shield of North Carolina (BCBSNC): still the main network of providers for the State Health Plan

Clear Pricing Network: another new network we have access to

- Primary care providers have a \$0 copay
- Specialists have a reduced copay
- Providers can be found under the Find a Doctor section at shpnc.org

Enroll between Oct. 15–31, 2020

- **Default 70/30.** You must elect 80/20 if that is your plan choice.
- **Save \$60/month.** You must attest that you are a non-tobacco user or if you are a tobacco user, you must complete a tobacco cessation session with your Primary Care Provider or at a CVS MinuteClinic by **Nov. 30, 2020.**
- **Show documentation for dependents.** Adding dependents requires documentation such as birth certificate for the birth of a child, copy of tax returns etc.



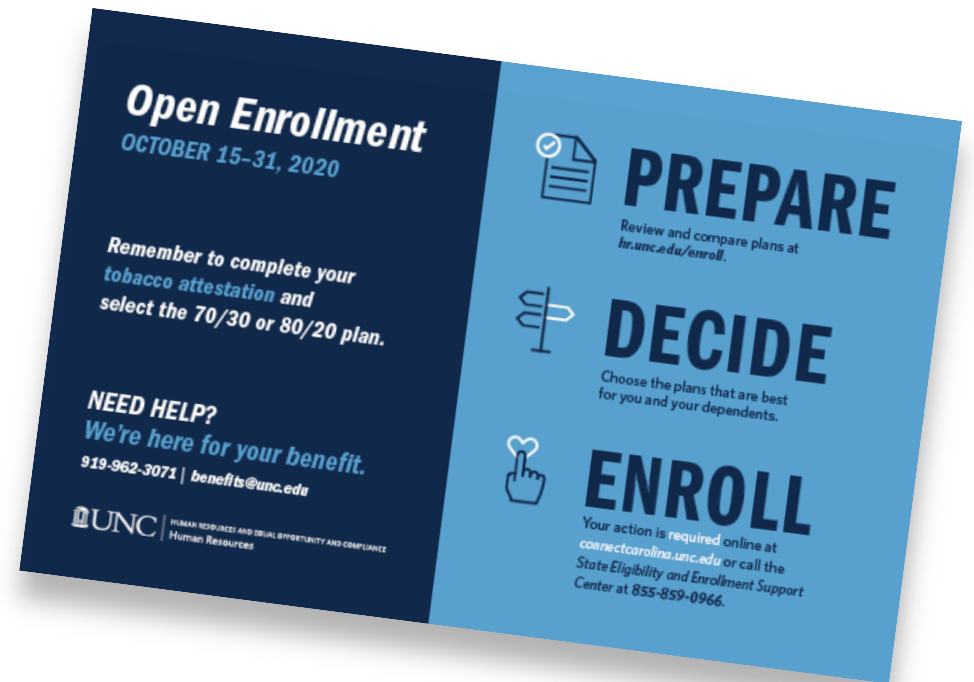
2021 NCFlex

Benefit Changes

Dental Plans

- Lower premiums in 2021.
- All three Plan Options offered in 2021.
- No waiting period.

Visit hr.unc.edu/benefits/plans/dental for updated costs.

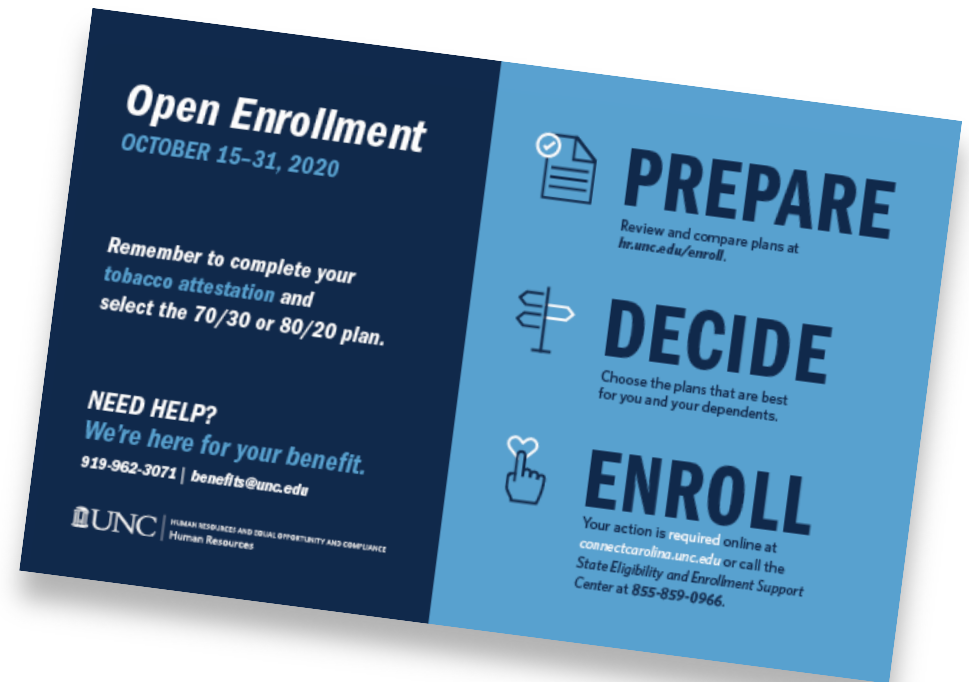


Flexible Spending Accounts

- You must re-enroll each year.
- Current contributions end on **Dec. 31, 2020**.
- Up to \$550 of Health Care Flexible Spending Account (HCFSA) contributions will rollover to 2021.
- New annual HCFSA contribution maximum is \$2,750.

Cancer and Specified Disease Coverage

- Can enroll in or increase coverage.
- No EOI required.



Dual Coverage

- May not be covered as both an employee and dependent.
- Children cannot be covered by both parents.
- Cannot be covered as dependent on Group Term Life Insurance or AD&D Plans if eligible as an employee.
- Learn more at go.unc.edu/NCFlex-Enrollment-Guide.



2021 UNC Group

Term Life

MetLife Plan

Changes

Combined UNC System MetLife Group Term Life Change

- The UNC Group Term Life plan (MetLife Life) has been merged under a UNC System contract as of Sept. 1, 2020.
- Coverage amounts remain the same.
- New rates have been updated with an overall 31% reduction in premiums.
- This new plan includes a new Accidental Death & Dismemberment (AD&D) benefit for employees only that equals the employee's amount of life insurance.
- Coverage of domestic partners.

Combined UNC System MetLife Group Term Life Change

On Jan. 1, 2021, the following updates will begin:

- The spouse maximum coverage will increase to \$250,000 with evidence of insurability (EOI).
- All children coverage will automatically increase to \$10,000. Cost is \$.57 for child(ren) total.

Retirees

- On Jan. 1, 2021, anyone retiring from the university will have the option to purchase term life insurance as a retiree.
- MetLife will mail out enrollment information to retirees about this coverage.
- There will be guaranteed coverage amounts for retirees.
- Retirees have the option to request additional coverage, subject to evidence of insurability.



NEXT STEPS

Begin preparing now by reviewing hr.unc.edu/enroll.

Set a calendar reminder that the Open Enrollment period is **Oct. 15-31, 2020**.

Again, **Oct. 31, 2020** is the last day to enroll or make changes to your benefit plan.



NEED HELP?

*Schedule a 20-minute session
with a UNC Benefits Consultant*

Thursday and Friday, Oct. 15 and 16	8 a.m.-5 p.m.
Monday, Oct. 19	1-5 p.m.
Tuesday, Oct. 20	8 a.m.-Noon
Wednesday, Oct. 21	1-5 p.m.
Thursday, Oct. 22	8 a.m.-Noon
Friday, Oct. 23	8 a.m.-Noon
Monday, Oct. 26	1-5 p.m.
Tuesday, Oct. 27	8 a.m.-Noon
Wednesday, Oct. 28	1-5 p.m.
Thursday and Friday, Oct. 29 and 30	8 a.m.-5 p.m.

We're here for your benefit.

919-962-3071 | benefits@unc.edu

hr.unc.edu/enroll



HUMAN RESOURCES AND EQUAL OPPORTUNITY AND COMPLIANCE
Human Resources

THANK YOU

We're here for your benefit.

919-962-3071 | benefits@unc.edu

hr.unc.edu/enroll



HUMAN RESOURCES AND EQUAL OPPORTUNITY AND COMPLIANCE

Human Resources